

Cropping images for the club digital projection system.

Please note: It would be beneficial to read the complete workshop before you attempt to follow the procedure.

In this workshop I will show you how to crop Landscape and Portrait images so they “best fit” the screen of the club digital projection system.

Note: If your Images are not sized correctly for the club projection system, there is a high risk that your image will be degraded when projected.

It is also recommended that your images are flattened before you proceed with this workshop. Go to Layers>Flatten Image.

The full screen size for the club system is 1400 pixels width by 1050 pixels high.

Cropping a landscape image.

Step 1: Open the landscape image you would like to crop. Locate and select your crop tool.



Step 2: In the crop options type 1400px in the width box, leave the height blank (do not type 0, the crop tool will not work). Leave the resolution blank and the resolution type set to pixels/inch.



Step 3: Next click in the top left hand corner of your image, by holding down the mouse button, drag your cursor to the bottom right hand corner, then let go of the mouse button.

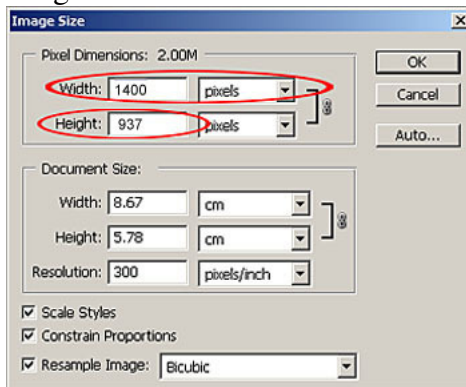
You should now see the crop selection around your image, also you will see 8 small squares, these are known as handles. If at this point you wish to use only part of the image or would like to change the shape of the crop, click and drag these handles to recompose your image. This will still resize your image to 1400 pixels width because that is the size we entered into the crop tool options in step 2.

Once you are happy with either your full frame crop or your recomposed crop, click on the tick icon on the right hand side of the crop tool options (see image on the next page), or hit the enter key on your keyboard. This will apply the crop.

(continue onto next page)



Step 4: Check your image size by going to, Image>Image Size. The image size box will appear. You will now see that your landscape image has a width of 1400 pixels, therefore this image will fit the full width of the club digital projection system. Ignore all the other information in this box apart from the image height. If the image height is below 1050 pixels this image is acceptable. Click OK to close image size box. If your image height is above 1050 pixels please read the section below on “Over sized images”.



Step 5: Next, follow the sections towards the end of this workshop on “Filling unused areas of the projection space”, “Assigning the sRGB colour space” and “Saving your image as a JPEG file”.

Over sized images

In step 4 of “Cropping a landscape image” I spoke about the landscape image height going above 1050 pixels. If your landscape image size height was over 1050 pixels this means your image is more a square format, rather than a landscape. In this case you will need to undo the crop by going to Edit>Undo Crop, or Ctrl Z on your keyboard. Then follow the lesson on “Cropping a portrait image”.

Cropping a portrait image.

Step 1: Open the portrait image you would like to crop. Locate and select your crop tool.



(continue onto next page)

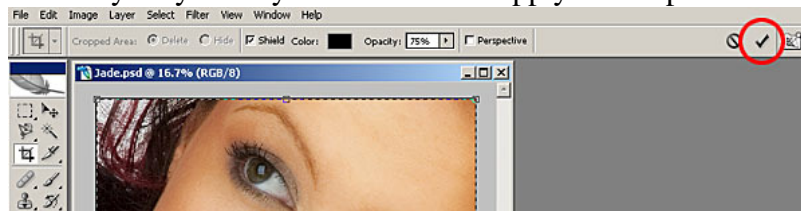
Step 2: In the crop options leave the width blank (do not type 0, the crop tool will not work). In the height box type 1050px. Leave the resolution blank and the resolution type set to pixels/inch.



Step 3: Next click in the top left hand corner of your image, by holding down the mouse button, drag your cursor to the bottom right hand corner, then let go of the mouse button.

You should now see the crop selection around your image. Also you will see 8 small squares, these are known as handles. If at this point you wish to use only part of the image or would like to change the shape of the crop, click and drag these handles to recompose your image. This will still resize your image to 1050 pixels high because that is the size we entered into the crop tool options in step 2.

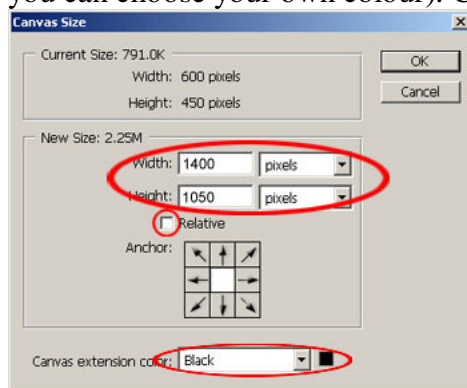
Once you are happy with either your full frame crop or your recomposed crop, click on the tick icon on the right hand side of the crop tool options (see below) or hit the enter key on your keyboard. This will apply the crop.



Step 4: Check your image size by going to, Image>Image Size. The image size box will appear. You will now see that your portrait image has a height of 1050 pixels, therefore this image will fit the full height of the club digital projection system. Ignore all the other information in this box. Click OK to close image size box.

Filling unused areas of the projection space.

In the case of portrait and sometimes landscapes images, our images do not fill the projected image space. The space needs to be filled to ensure correct projection. To fill the unused projection space, go to Image>Canvas Size. In the Canvas Size dialog box un-tick the Relative box, change the New Size units to Pixels. In the Width box type 1400, and in the height box type 1050. Select Black for the Canvas extension colour, (this is generally considered to show your DPI's to their best advantage, but you can choose your own colour). Click OK to accept the new canvas size.

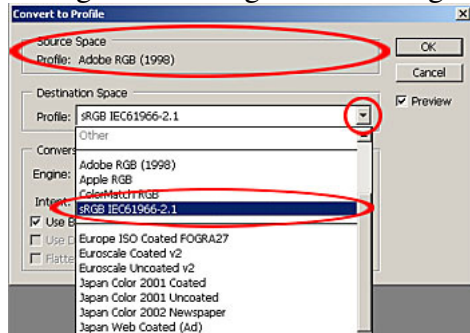


(continue onto next page)

Assigning the sRGB colour space.

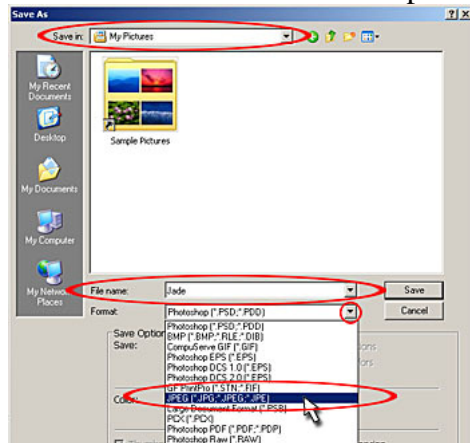
All the Digital Projected Images (DPI's) we are using for competitions need to have the sRGB colour space assigned to them.

To ensure that your image is using the sRGB colour space, in Photoshop go to Edit>Convert to Profile. The Convert to Profile dialog box will show your colour space. If your Source Space shows "sRGB IEC61966-2.1" your image space is correct for projection, so Click OK to exit. If your colour space is showing anything other than "sRGB IEC61966-2.1" you need to click the arrow next to Destination Space and select "sRGB IEC61966-2.1" from the drop down menu. Click OK to accept these settings. Your Image is now using the correct sRGB colour space for projection.

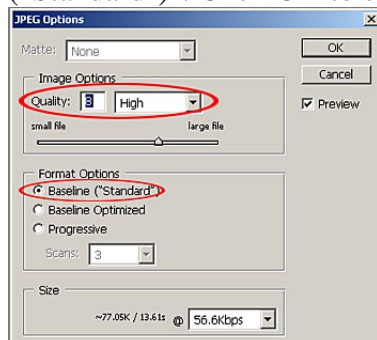


Saving your images as a JPEG file.

To save your images as JPEG file, go to, File>Save As. In the Save As box, select the place you would like to save the image. For this demonstration I have selected My Pictures. Give your image a title by typing it in the "File Name" box. Then select "JPEG" from the "Format" drop down menu.



Click Save. A JPEG options box will appear. In the Image Options, set the Quality between the values of 8 and 12. The value 8 will give you a smaller file size and a lower quality image, whereas the value 12 will give you a larger file size and a higher quality image. But for the purpose of projection you will not notice a visual differences between these files. The Format Options should be left at "Baseline ("Standard")". Click OK to save the file.



Your Image is now sized and saved for projection.